

Štirje preludiji/Four preludes/Quattro preludi

Nini Vidić

1.

(1997)

Andante (♩ = cca 70)

mf legato

cresc.

f

(m.s.) *(m.d.)* *(m.s.)* *(m.d.)*

2.

Molto ritmico (♩ = 60)

12



14

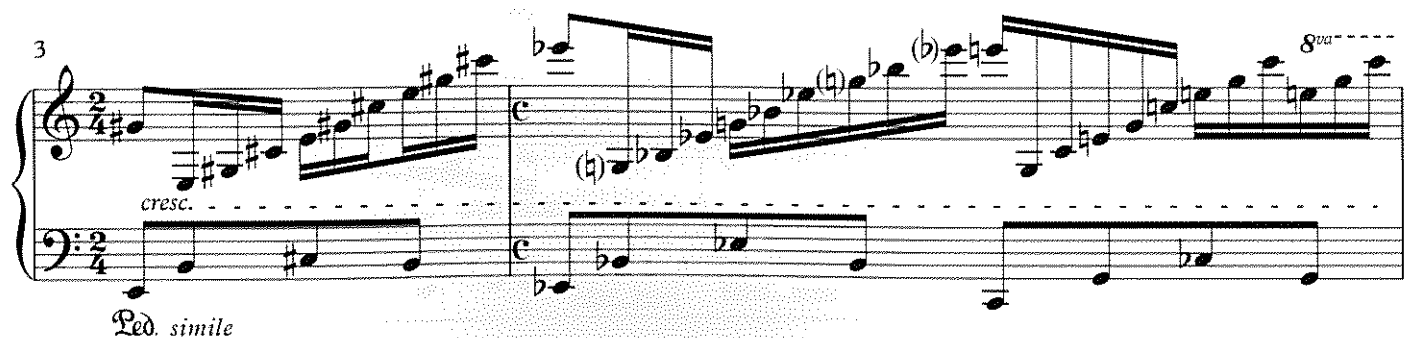
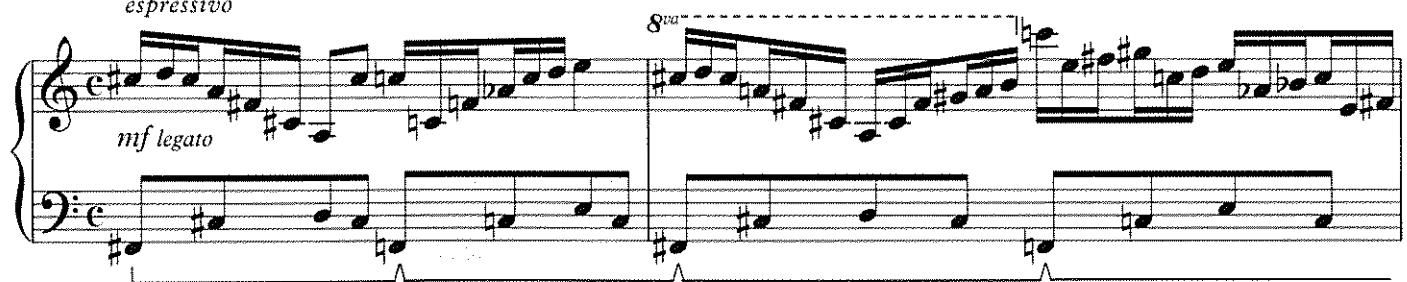


16



3.

Calmo (♩ = 52-60)
espressivo



Ped. simile

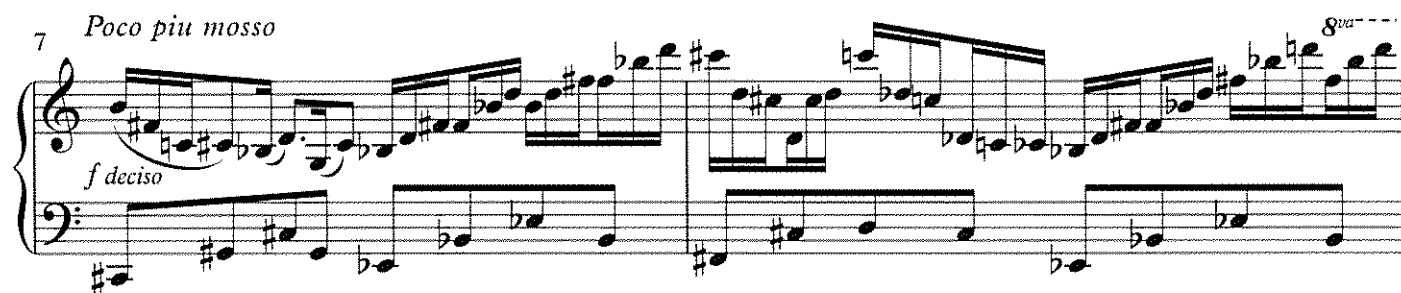
5 (8)

subito p *leggero*



7 *Poco piu mosso*

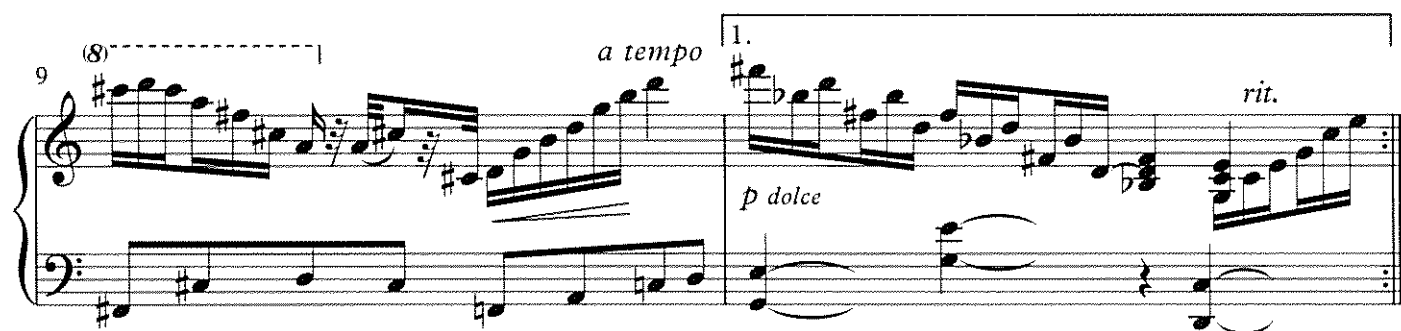
f deciso *8va*



9 (8)

a tempo 1. *rit.*

p dolce



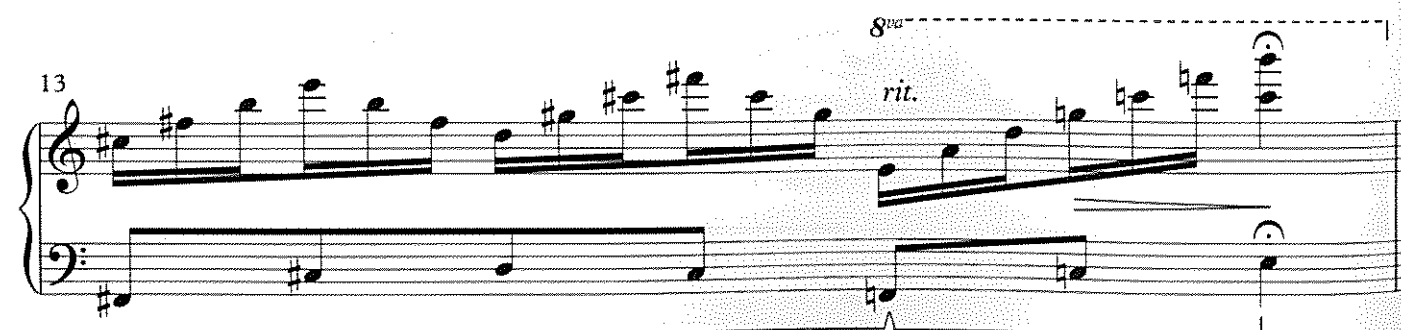
11 2.

p dolce



13

rit. *8va*



Energico (♩ = cca 92)

f legato
senza Ped.

4

7

11

14

17